



**HAL**  
open science

## Serum-derived factors of breast cancer patients with brain metastases alter permeability of a human blood–brain barrier model

Carolin Curtaz, Constanze Schmitt, Saskia-Laureen Herbert, Jonas Feldheim, Nicolas Schlegel, Fabien Gosselet, Carsten Hagemann, Norbert Roewer, Patrick Meybohm, Achim Wöckel, et al.

### ► To cite this version:

Carolin Curtaz, Constanze Schmitt, Saskia-Laureen Herbert, Jonas Feldheim, Nicolas Schlegel, et al.. Serum-derived factors of breast cancer patients with brain metastases alter permeability of a human blood–brain barrier model. *Fluids and Barriers of the CNS*, 2020, 17, pp.31. 10.1186/s12987-020-00192-6 . hal-03127441

HAL Id: hal-03127441

<https://univ-artois.hal.science/hal-03127441>

Submitted on 23 Jul 2021

**HAL** is a multi-disciplinary open access archive for the deposit and dissemination of scientific research documents, whether they are published or not. The documents may come from teaching and research institutions in France or abroad, or from public or private research centers.

L'archive ouverte pluridisciplinaire **HAL**, est destinée au dépôt et à la diffusion de documents scientifiques de niveau recherche, publiés ou non, émanant des établissements d'enseignement et de recherche français ou étrangers, des laboratoires publics ou privés.



Distributed under a Creative Commons Attribution 4.0 International License

RESEARCH

Open Access



# Serum-derived factors of breast cancer patients with brain metastases alter permeability of a human blood–brain barrier model

Carolyn J. Curtaz<sup>1†</sup>, Constanze Schmitt<sup>2†</sup>, Saskia-Laureen Herbert<sup>1</sup>, Jonas Feldheim<sup>3</sup>, Nicolas Schlegel<sup>4</sup>, Fabien Gosselet<sup>5</sup>, Carsten Hagemann<sup>3</sup>, Norbert Roewer<sup>2</sup>, Patrick Meybohm<sup>2</sup>, Achim Wöckel<sup>1</sup> and Malgorzata Burek<sup>2\*</sup>

## Abstract

**Background:** The most threatening metastases in breast cancer are brain metastases, which correlate with a very poor overall survival, but also a limited quality of life. A key event for the metastatic progression of breast cancer into the brain is the migration of cancer cells across the blood–brain barrier (BBB).

**Methods:** We adapted and validated the CD34<sup>+</sup> cells-derived human in vitro BBB model (brain-like endothelial cells, BLECs) to analyse the effects of patient serum on BBB properties. We collected serum samples from healthy donors, breast cancer patients with primary cancer, and breast cancer patients with, bone, visceral or cerebral metastases. We analysed cytokine levels in these sera utilizing immunoassays and correlated them with clinical data. We used paracellular permeability measurements, immunofluorescence staining, Western blot and mRNA analysis to examine the effects of patient sera on the properties of BBB in vitro.

**Results:** The BLECs cultured together with brain pericytes in transwells developed a tight monolayer with a correct localization of claudin-5 at the tight junctions (TJ). Several BBB marker proteins such as the TJ proteins claudin-5 and occludin, the glucose transporter GLUT-1 or the efflux pumps PG-P and BCRP were upregulated in these cultures. This was accompanied by a reduced paracellular permeability for fluorescein (400 Da). We then used this model for the treatment with the patient sera. Only the sera of breast cancer patients with cerebral metastases had significantly increased levels of the cytokines fractalkine (CX3CL1) and BCA-1 (CXCL13). The increased levels of fractalkine were associated with the estrogen/progesterone receptor status of the tumour. The treatment of BLECs with these sera selectively increased the expression of CXCL13 and TJ protein occludin. In addition, the permeability of fluorescein was increased after serum treatment.

**Conclusion:** We demonstrate that the CD34<sup>+</sup> cell-derived human in vitro BBB model can be used as a tool to study the molecular mechanisms underlying cerebrovascular pathologies. We showed that serum from patients with

\*Correspondence: Burek\_M@ukw.de

<sup>†</sup>Carolyn J. Curtaz and Constanze Schmitt contributed equally as first authors

<sup>2</sup> Department of Anaesthesia and Critical Care, University of Würzburg, Oberdürrbacher Straße 6, 97080 Würzburg, Germany  
Full list of author information is available at the end of the article



cerebral metastases may affect the integrity of the BBB in vitro, associated with elevated concentrations of specific cytokines such as CX3CL1 and CXCL13.

**Keywords:** Metastatic breast cancer, Blood–brain barrier, In vitro models, CX3CL1, CXCL13

## Introduction

The blood–brain barrier (BBB) is a natural barrier that specializes in protecting the brain from harmful substances, including anti-tumour drugs. In vitro models can help to better understand the mechanisms and changes at the BBB in cancer patients and can provide information for future therapies. In vitro BBB models have been used over the past five decades to investigate molecular mechanisms underlying physiological and pathological processes at the BBB and central nervous system (CNS) and to perform drug discovery studies. Central to these models are the brain microvascular endothelial cells, which form a tight barrier through cell–cell contacts, tight, adherens and gap junctions. Specific transporter and receptors are responsible for supplying the brain with energy and clearing it of toxic substances. Rat, mouse, pig and bovine in vitro models are commonly used to study BBB characteristics [1, 2]. Human primary brain microvascular endothelial cells rapidly lose their properties when removed from their natural environment [3] and show high permeability when immortalized [1]. The development of stem cell-based technologies opened up a new opportunity to generate human in vitro BBB models. Induced pluripotent stem cells (iPSCs)-derived brain-like endothelial cells (BLECs) can be obtained by specific differentiation protocols [4–11]. Another published method is the use of umbilical cord blood-derived hematopoietic stem cells for differentiation into endothelial cells, followed by the induction of BBB properties by co-culture with brain pericytes [12–14]. These advances in in vitro BBB modelling contribute to advances in the understanding of CNS disorders, such as brain metastases of breast cancer [15–17].

Breast cancer is the world's most common malignant tumour in women and causes the highest tumour-related death among them in western industrialised countries. Fortunately, nowadays, primary breast cancer is a well treatable disease with high overall survival. In contrast, tumour metastases such as visceral, bone and cerebral metastases at later stages of this cancer play an important role for overall survival and mortality. However, appearance of metastases also means that a level of systemic tumour disease was reached and therefore describes a palliative situation. Overall, about 10–15% of the breast cancer patients develop cerebral metastases, one of the most severe metastases types, which is associated with a very poor prognosis with only 20% one-year survival [18].

Particularly, histological cancers of the triple-negative (estrogen receptor, progesterone receptor and epidermal growth factor receptor 2 negative) and epidermal growth factor receptor 2 (HER2/neu) subtypes have a high potential for cerebral metastases [19, 20]. The mechanism of metastatic progression of breast cancer into the brain and the migration of cancer cells via the BBB remains not well understood in detail.

More than 40 chemokines, small proteins of 8–14 kDa, were identified in humans. They are grouped into four classes based on the position of their N-terminal cysteine residues: CC, CXC, XC and CX3C. They play a role in numerous biological processes like immune system homeostasis, cell proliferation and differentiation. Recent evidence indicates that chemokines also play a role in cancer progression and metastatic dissemination of solid tumours [21].

In the present study, we used a CD34<sup>+</sup> cells-derived in vitro BBB model in co-culture with brain pericytes to study the differential effects of breast cancer patient sera on BBB properties. We analysed chemokine levels in the sera of breast cancer patients with primary cancer, bone, visceral or cerebral metastases relative to a healthy control group. We identified two chemokines that were selectively elevated in the group with cerebral metastases and these sera displayed impairing effects towards the BBB integrity in vitro.

## Materials and methods

### Patient samples

All human samples were collected from donors after signing an informed consent form in accordance with German legislation rules. Hereby, we followed and strictly adhered to the Ethical Guidelines of the University of Würzburg (reference number: 137/18-me), which are in accordance to the Helsinki Declaration of 1975 and its revision of 1983. We collected blood samples from 103 patients with breast cancer and a healthy control group of 15 women (Table 1). These samples were pseudonymised and classified into five distinct groups: cancer-free individuals (healthy control, C, n=15), breast cancer patients with primary cancer (PC, n=26), breast cancer patients with visceral (VM, n=30), bone (BM, n=20) and cerebral metastases (CM, n=12). The blood specimen were centrifuged at 2000 g, the sera collected and stored at –80 °C until use.

**Table 1 Summary of clinical data**

	C	PC	VM	BM	CM
Patient characteristics					
Total number	15	26	30	20	12
Median age	66	57.6	60	66.3	62.1
Deceased					5
Pre-/postmenopausal	1/14	10/16	6/24	2/18	2/10
Tumour characteristics					
ER/PR positive		15	17	16	1
HER2/neu positive		8	11	3	11
Triple negative		2	2		
Grading					
Well differentiated (G1)		2	4	0	0
Moderately differentiated (G2)		18	11	16	6
Poorly differentiated (G3)		6	15	4	6
% of Ki67 positive cells (median)		25%	40%	15%	30%
Other					1

BM bone metastases, C control group of healthy donors, CM cerebral metastases, ER estrogen receptor, Her2/neu human epidermal growth factor 2, PC primary cancer, PR progesterone receptor, VM visceral metastases

### Brain pericytes

The brain pericytes have been isolated and purified as previously published [22, 23]. Briefly, brain capillaries were isolated from bovine brain as previously described [24]. Then, these microvessels were mechanically dissociated and immediately dispatched into 12 Matrigel-coated dishes containing DMEM supplemented with 20% FCS, 2 mM L-glutamine, 50 g/mL gentamicin, and 1 ng/mL basic fibroblast growth factor (bFGF). On the following day, 60 mm Petri dishes were carefully screened for large vessels and each of them was scraped and discarded. Pericytes that migrated out of the capillaries rapidly divided and invaded the whole surface of the dish. Confluent cultures were dissociated with 0.05% trypsin/0.02% EDTA saline buffer (Biochrom AG, Berlin, Germany), and cells were frozen in liquid nitrogen. At last, brain pericytes were thawed and immortalized with the SV40 antigen.

### CD34<sup>+</sup> cells-derived human in vitro BBB model

The written informed consent was obtained from the infants' parents prior to collection of the infants' umbilical cord blood. CD34<sup>+</sup> hematopoietic stem cells-derived human endothelial cells were isolated and purified as described previously and adapted in our laboratory using already published procedures. The cells were grown in 6- or 12-well transwells in monoculture or co-culture with brain pericytes for 6 days to induce BBB-like properties and are termed brain-like endothelial cells (BLECs) [12, 14, 25]. Shortly,  $80 \times 10^3$  or  $325 \times 10^3$  BLECs were

cultured on Matrigel coated 12- or 6-well transwell inserts respectively (pore size 0.4  $\mu$ m, Corning) for two days in Microvascular Endothelial Cell Growth Medium (ECM) (PLEOBiotech) supplemented with 5% fetal calf serum (FCS). Brain pericytes [12] were cultured on gelatine-coated plates in DMEM (Sigma) supplemented with 20% FCS, 2 mM L-glutamine and 50  $\mu$ g/ml gentamycin. For co-cultures,  $50 \times 10^3$  brain pericytes were seeded into 12-well plates and grown in ECM along with the BLECs on transwell inserts for 5 days to induce BBB-characteristics of the latter. Endothelial cells grown alone or in co-culture with brain pericytes were used to determine paracellular permeability and to isolate RNA and protein. For the incubation experiments, BLECs were treated with ECM supplemented with 2% patient sera for 24 h before transcriptional, immunofluorescent and permeability studies.

### Immunofluorescence

CD34<sup>+</sup>-derived endothelial cells were grown on their own or in co-culture with pericytes as described above, with or without 2% patient serum in the medium for 24 h. Separate treatments were done with individual sera. Cells were stained on transwell inserts with anti-claudin-5 antibody, conjugated to Alexa Fluor 488 (Thermo Fisher Scientific) as described previously [26].

### Real-time PCR

Real-time PCR was performed as previously described [26–28]. Briefly, RNA was isolated using the RNA isolation kit NucleoSpin<sup>®</sup> RNA (Machery-Nagel) according to manufacturer's instruction. Total RNA (500 ng) was reverse transcribed using the High Capacity cDNA Reverse Transcription Kit (Thermo Fisher Scientific). The commercially available TaqMan probes Hs00170162\_m1 (OCLN), Hs00533949\_s1 (CLDN5), Hs00184500\_m1 (ABCB1), Hs00988717\_m1 (ABCC4), Hs01053790\_m1 (ABCG2), Hs00892681\_m1 (SLC2A1), Hs00355476\_m1 (CCL20), Hs03676656\_m1 (CXCL12), Hs00234140\_m1 (CCL2), Hs00757930\_m1 (CXCL13), Hs00173527\_m1 (CXCR5), Hs00171086\_m1 (CX3CL1) and Hs00365842\_m1 (CX3CR1) were used with the TaqMan<sup>®</sup> Fast Advanced Master Mix in the StepOne-Plus Real-Time PCR System (Thermo Fisher Scientific). Calnexin (CANX) (Hs01558409\_m1) was used for normalization. Relative expression was calculated by the comparative Ct method.

### Western blot analysis

Western blot was performed as recently described [29, 30]. Twenty micrograms of protein were subjected to SDS-PAGE followed by transfer to a PVDF membrane (Bio-Rad Laboratories) and blocked with 5% (w/v)

non-fat milk in phosphate buffered saline (PBS, pH 7.4). The membranes were incubated with the respective primary antibodies diluted in PBS containing 1% Bovine Serum Albumin (BSA, pH 7, Sigma) at 4 °C overnight. Following antibodies were used: anti-BCRP (1:100, Abcam, #Ab-24114), CLDN5 (1:500, Thermo Fisher Scientific #35-2500), GLUT-1 (1:2000, Millipore, #07-1401), MCT1 (1:200, Santa Cruz Biotechnology, #sc-14917), MRP4 (1:500, ENZO, #ALX-801-039-C100), LRP1 (1:1000, Abcam, #Ab92544), P-Glycoprotein (P-GP, 1:200, Santa Cruz Biotechnology, #sc55510), RAGE (1:200, Santa Cruz Biotechnology, #sc-8230), Transferrin Receptor (TFR, 1:500, Thermo Fisher Scientific, #13-6800). After incubation with respective secondary antibodies, images were taken using Enhanced Chemiluminescence solution and FluorChem FC2 Multi-Imager II (Alpha Innotech). The intensity of protein bands was measured with ImageJ software.

#### Endothelial permeability measurements

Coated transwell inserts and inserts containing confluent BLECs were placed into a plate with 1.5 ml HEPES-buffered Ringer's solution (pH 7.4). 500 µl of the same solution containing 1 mM fluorescein (Sigma) was added to the upper compartment. During the 1-hour assay, the inserts were placed into a new well with fresh buffer solution every 20 min and aliquots from the receiver compartment were collected. Aliquots from the donor solution were taken at the beginning and at the end of the experiment. All samples were measured at 490/516 nm wavelengths using a microplate reader Tecan Microplate Reader (Thermo Fisher Scientific). For each treatment condition, at least three inserts with and without cells were tested.

#### Cell viability measurement

BLECs were grown to confluence in a 96-well plate and were treated with recombinant human BCA-1 (Pepro-Tech, #300-47) or/and fractalkine (PeproTech, #300-31) in concentrations of 0.5, 5, 50 and 500 ng/ml for 24 h. After the incubation, 100 µl MTT solution (1 mg/ml, Sigma) prepared in DMEM without phenol red was added and incubated at 37 °C for 4 h. Untreated cells were used as a control. The MTT solution was removed and the formazan crystals were solubilized with 100 µl of isopropanol followed by absorbance measurement at 560 nm and 690 nm using Tecan Microplate Reader (Thermo Fisher Scientific).

#### Cytokine immunoassay

Concentrations of human CCL2, CCL5, CCL20, CXCL12, CXCL13 and CX3CL1 were measured in duplicate in individual patient sera using a

multi-analyte immunoassay and Luminex® bead technology with reagent kits (Merck Millipore) according to manufacturer's instructions.

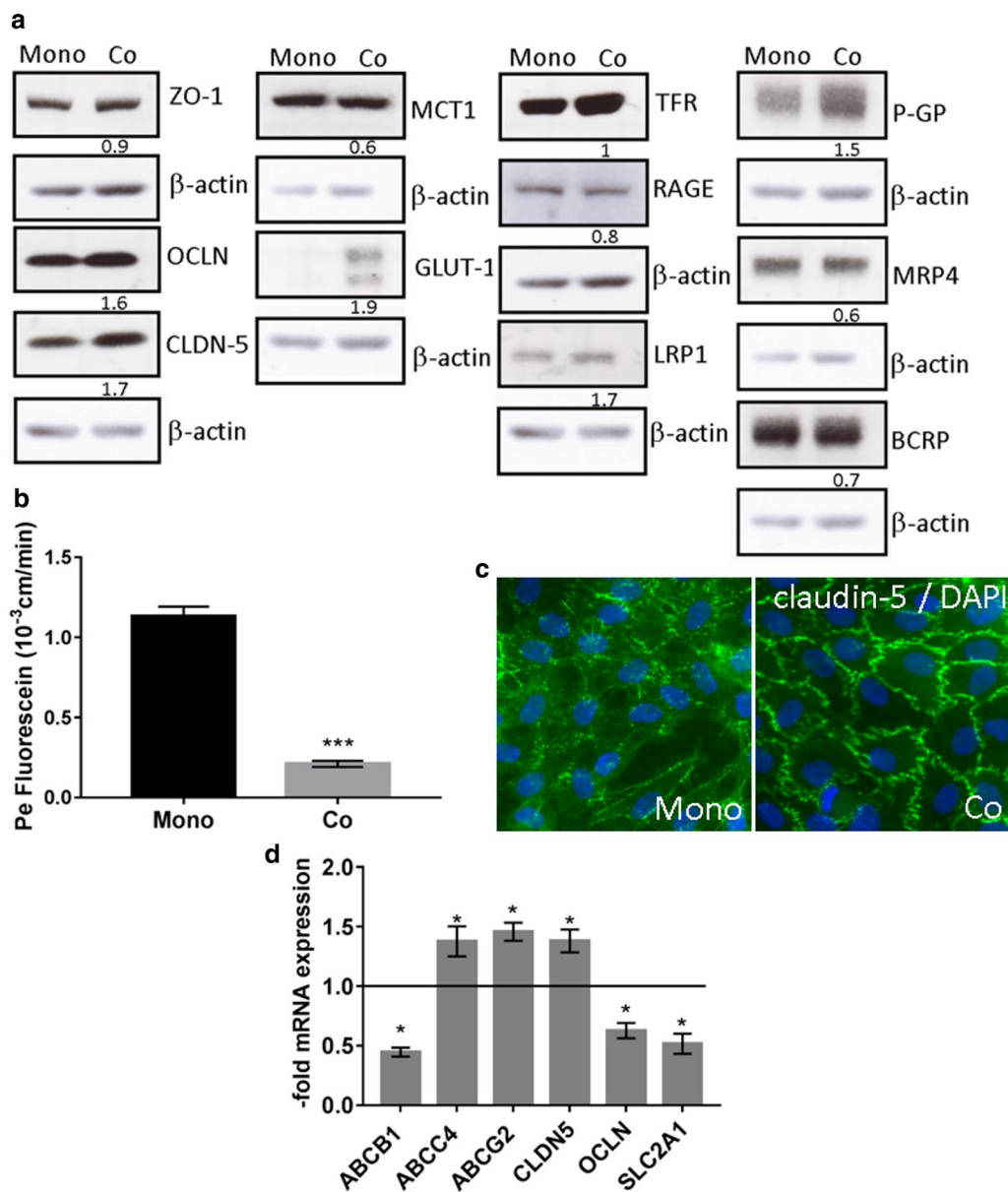
#### Statistical analysis

GraphPad Prism 7 (GraphPad Software) was used for statistical analyses. Data are expressed as mean ± standard deviation (SD) unless otherwise stated. Differences among groups were analysed either using the ANOVA with Tukey's multiple comparison test or a non-parametric Kruskal–Wallis test with Dunn's multiple comparison post hoc test. Mann–Whitney U test was used to compare two groups. Statistical significance was assumed for  $p < 0.05$ . The Spearman-Rho correlation coefficients were calculated for any two measurements of chemokines and of chemokines and tumour properties within the patient population ( $n = 103$ ). Correlation analysis was performed using the IBM SPSS Statistics 23 Software (IBM Corporation).

## Results

#### Validation of human in vitro BBB model

After 6 days co-culture with brain pericytes expression of TJ proteins, occludin and claudin-5 was induced in BLECs (Fig. 1a). The solute carrier transporter GLUT-1 was also induced. Among the cellular receptors and efflux pumps, only the LRP-1 and P-GP showed induction. Other analysed proteins were slightly down-regulated (Fig. 1a). Measurement of paracellular permeability of fluorescein (400 Da) yielded low permeability values ( $0.21 \pm 0.02 \times 10^{-3}$  cm/min), which were more than 80% lower than in CD34<sup>+</sup>-derived endothelial cells monoculture ( $1.13 \pm 0.06 \times 10^{-3}$  cm/min), (Fig. 1b). In addition, the endothelial cells were stained with anti-claudin-5 antibody (Fig. 1c). Only BLECs in co-culture with pericytes formed a monolayer with the correct localization of claudin-5 at the TJs. Next, mRNA expression of BBB markers was evaluated. All analysed transcripts were significantly altered in BLECs co-cultured with pericytes compared to CD34<sup>+</sup>-derived endothelial cells monoculture (Fig. 1d). While ABCB1, SLC2A1 and occludin mRNAs were downregulated, ABCC4, ABCG2 and claudin-5 mRNAs were significantly upregulated. There is a discrepancy between protein and mRNA levels for GLUT-1, P-gp and OCLN. Protein levels are induced due to co-culture, while mRNA levels are reduced. The reason for this could be posttranscriptional regulation that can interfere with translation, e.g. regulation by microRNA [31]. These results indicate that co-culture with brain pericytes is



**Fig. 1** BLECs in co-culture with pericytes develop a tight barrier. CD34<sup>+</sup>-derived endothelial cells were cultured as monoculture or co-culture with brain pericytes for 6 days in a transwell system. **a** Expression of selected BBB marker proteins was induced in co-culture (Co) in comparison to monoculture (Mono) as shown by Western blot. Numbers under the representative bands indicate protein levels normalised to  $\beta$ -actin and to monoculture control. **b** Paracellular permeability for fluorescein of CD34<sup>+</sup>-derived endothelial cells monolayers either cultured alone or together with pericytes. Data are shown as mean  $\pm$  SD (n = 3), \*\*\*p < 0.001. **c** Expression of claudin-5 in CD34<sup>+</sup>-derived endothelial cells cultured alone or in co-culture with brain pericytes shown by immunofluorescence. Magnification  $\times$  400, green: claudin-5, blue: DAPI nuclear staining. **d** Messenger RNA expression of transporters and tight junction proteins in BLECs was quantified by qPCR. Target gene expression was normalized to endogenous control and shown as fold over control, which was arbitrarily set as 1 (control level marked in graph). Data are shown as mean  $\pm$  SD of three experiments. \*p < 0.05 statistically significant versus control. *BCRP* breast cancer resistance protein (*ABCG2*), *CLDN5* claudin-5, *GLUT-1* glucose transporter type 1 (*SLCA1*), *LRP1* LDL receptor related protein 1, *MCT1* monocarboxylate transporter 1 (*SLC16A1*), *MRP4* multidrug resistance-associated protein 4 (*ABCC4*), *OCLN* occludin, *P-GP* P-glycoprotein 1 (*ABCB1*), *RAGE* receptor for advanced glycation end-products (AGER), *TFR* transferrin receptor (TFRC), *ZO1* zonula occludens 1 (*TJP1*)

indispensable for the induction of BBB-properties in CD34<sup>+</sup>-derived endothelial cells.

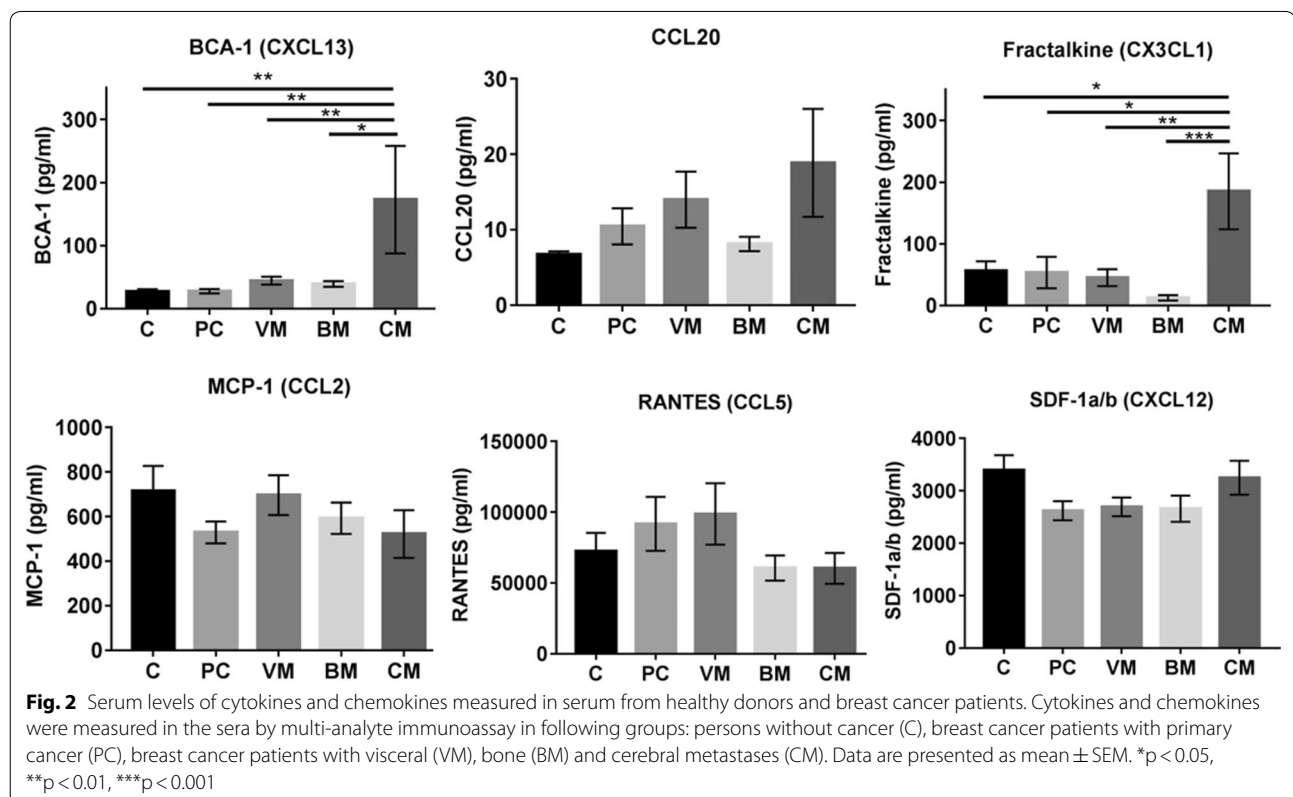
#### Quantification of chemokines in patient serum

We compared the concentration of selected chemokines in the sera of healthy controls (C), breast cancer patients with primary cancer (PC), breast cancer patients with visceral (VM), bone (BM) and cerebral metastases (CM) using an immunoassay (Fig. 2). Mean serum concentrations of BCA-1 (CXCL13) and fractalkine (CX3CL1) were significantly higher in the sera of breast cancer patients with cerebral metastases compared to all other patient populations or controls. CCL20 showed a similar tendency. No differences between the groups were found for the mean serum concentrations of MCP-1 (CCL2), RANTES (CCL5) and SDF-1a/b (CXCL12) (Fig. 2). In the patient population a statistically significant correlations between MCP-1 and RANTES ( $r=0.238$ ,  $p=0.04$ ), BCA-1 and CCL20 ( $r=0.362$ ,  $p<0.01$ ), and histological grading and Ki67 staining ( $r=0.456$ ,  $p<0.01$ ) were seen (Table 2). Patients with ER and PR negative tumours had statistically significant higher fractalkine concentrations in serum (Fig. 3). A statistically significant negative correlation between BCA-1 concentrations

and the histological grading ( $r=-0.808$ ,  $p=0.003$ ) was seen in patients with cerebral metastases ( $n=12$ ).

#### Patient serum and recombinant chemokines lead to reduced barrier properties of BLECs

After identifying two selectively elevated chemokines in the sera of breast cancer patients with brain metastases, we asked if such sera could affect BBB integrity. To test this hypothesis, we treated BLECs for 24 h with 2% control sera or sera from breast cancer patients with brain metastases (Fig. 4). Serum-derived factors significantly increased the paracellular permeability of the endothelial monolayer (Fig. 4a). In addition, staining of serum-treated cells with anti-claudin-5 antibody revealed areas with reduced claudin-5 staining within the monolayer, suggesting a leaky barrier at that site (Fig. 4b, white arrow). Next, we analysed the mRNA expression of chemokines and BBB-markers after serum treatment (Fig. 4c). We detected a significant increase in occludin and BCA-1 mRNA levels in cells treated with sera of breast cancer patients with cerebral metastases compared to cells treated with the control serum. Other markers and chemokines such as ABCB1, ABCG2, claudin-5, CCL2, CCL20, CXCR5 (CXCL13 receptor), CX3CL1, CX3CR1 (CX3CL1 receptor) were not significantly altered (Fig. 4c). These results suggest that even low levels



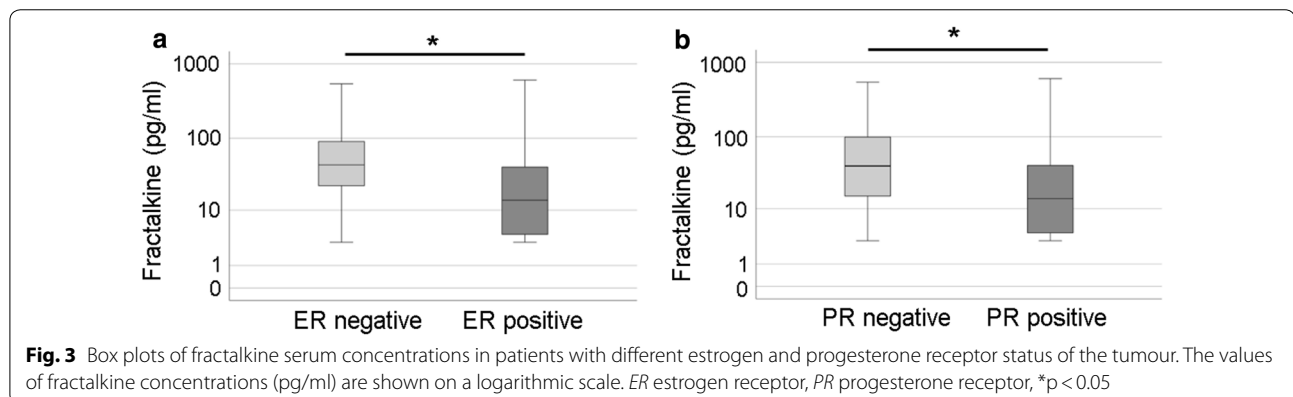
**Table 2** Correlation analysis of chemokine concentrations and tumour characteristics

Correlates with:		MCP-1 (pg/ml)	RANTES (pg/ml)	SDF-1a/b (pg/ml)	BCA-1 (pg/ml)	CCL20 (pg/ml)	Grading	Ki67 staining
Fractalkine (pg/ml)	r	-0.03	0.09	0.18	0.19	0.04	0.13	0.18
	p	0.83	0.45	0.12	0.11	0.73	0.33	0.20
MCP-1 (pg/ml)	r		0.238*	0.13	-0.12	0.00	-0.04	0.02
	p		0.04	0.26	0.29	0.99	0.79	0.87
RANTES (pg/ml)	r			0.20	0.04	0.05	-0.09	0.19
	p			0.05	0.68	0.60	0.44	0.11
SDF-1a/b (pg/ml)	r				0.02	-0.12	-0.09	0.17
	p				0.83	0.24	0.41	0.15
BCA-1 (pg/ml)	r					0.362**	-0.04	0.08
	p					<0.01	0.72	0.51
CCL20 (pg/ml)	r						0.00	0.15
	p						0.98	0.24
Grading	r							0.456**
	p							<0.01

r correlation coefficient (the positive "r" means positive correlation, while the negative "r" means negative correlation; the closer r value to 1 or -1, the greater the correlation)

p: p value indicating statistical significance

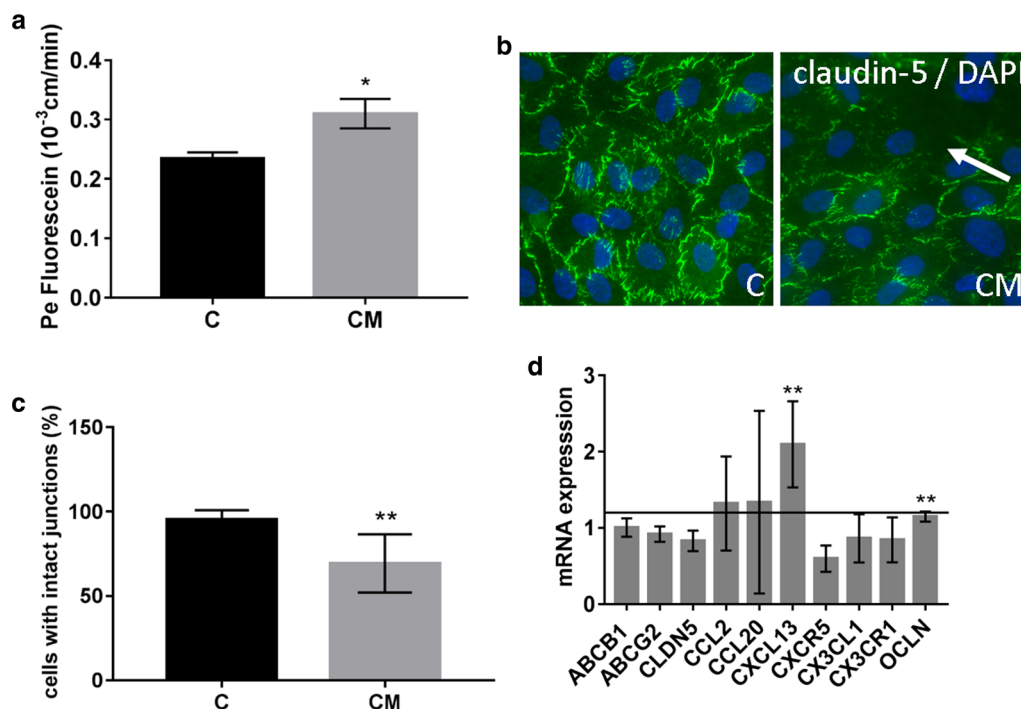
\*p<0.05; \*\*p<0.01



of patient serum (2%) can increase paracellular permeability and alter the expression and cellular localization of TJ proteins responsible for sealing of the BBB. We next examined the effects of recombinant BCA-1 and fractalkine on BLECs (Fig. 5). We tested the dose-dependent effects of both chemokines on cell viability using MTT assay (Fig. 5a). BCA-1 led to an increased cell proliferation in concentrations of 0.5 and 5 ng/ml. This effect was also observed in combination with 0.5 ng/ml fractalkine. Fractalkine alone showed inhibitory effects on cell viability at a concentration of 0.5, 50 and 500 ng/ml, similar to BCA-1/fractalkine in concentration of 500 ng/ml. We measured the CLDN5 and OCLN mRNA expression in cells treated with 0.5, 5 and 500 ng/ml BCA-1 or/and fractalkine. A significant increase in CLDN5 mRNA was

observed in samples treated with 0.5 ng/ml fractalkine and 5 ng/ml BCA-1/fractalkine. The OCLN mRNA was reduced after treatment with 5 ng/ml fractalkine and 500 ng BCA-1/fractalkine (Fig. 5b). In addition, we measured the permeability to fluorescein in cells treated with 0.5, 5 and 500 ng/ml BCA-1 or/and fractalkine (Fig. 5c). Interestingly, after a treatment with 5 ng/ml BCA-1 alone and in combination with fractalkine, we found a strong increase in the paracellular permeability. Chemokines at the lowest concentration, which was similar to the chemokine level measured in patient sera, had no effect on the paracellular permeability.





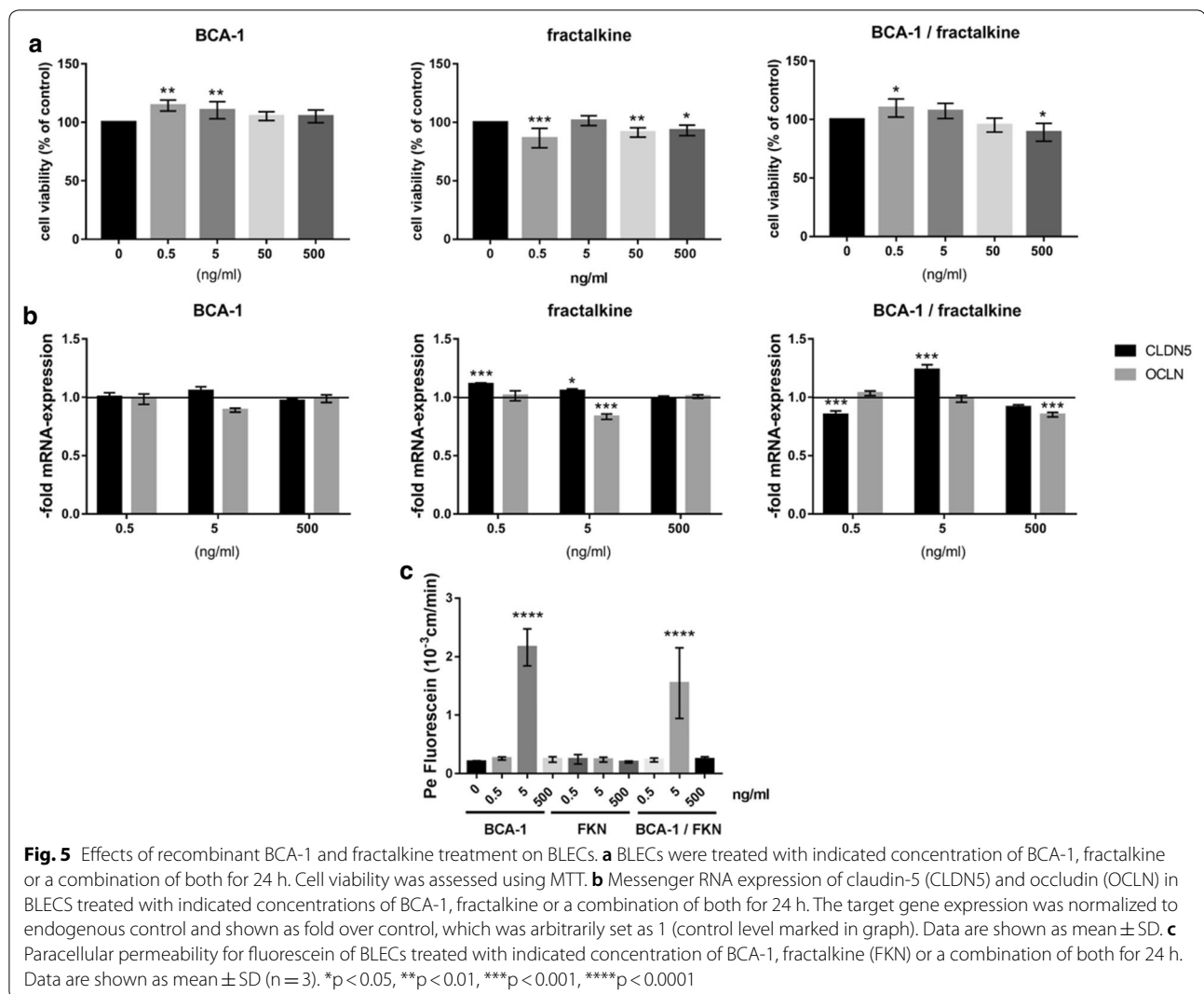
**Fig. 4** BLECSs treated with serum from patients with cerebral metastases show decreased barrier properties. BLECSs were co-cultured with brain pericytes for 6 days in a transwell system. **a** BLECSs were treated with the control sera (C) and sera from breast cancer patients with cerebral metastases (CM) for 24 h followed by measuring the paracellular permeability for fluorescein. Data are shown as mean  $\pm$  SD of three independent experiments, \* $p < 0.05$ . **b** Immunostaining of claudin-5 in BLECSs co-cultured with pericytes and treated either with serum from healthy donors (C) or breast cancer patients with cerebral metastases (CM). The arrow indicates loss of claudin-5 staining at the tight junctions of BLECSs treated with serum from breast cancer patients with CM. Shown is one representative image of  $n = 6$ . Magnification  $\times 400$ , green: claudin-5, blue: DAPI nuclear staining. **c** Quantification of cells with intact claudin-5 junctions presented in **b**. **d** Messenger RNA expression of chemokines and BBB-markers in BLECSs treated with control serum and serum from breast cancer patients with cerebral metastases. The mRNA was quantified by qPCR. The target gene expression was normalized to endogenous control and shown as fold over control, which was arbitrarily set as 1 (control level marked in graph). Data are shown as mean  $\pm$  SD of  $n = 4$  (control sera) and  $n = 5$  (CM). \*\* $p < 0.01$  statistically significant versus control. C-X-C Motif Chemokine Receptor 5 (CXCR5), C-X3-C Motif Chemokine Receptor 1 (CX3CR1)

## Discussion

The integrity of the BBB is a key feature responsible for protecting the brain from harmful substances, regulating entry and efflux of macromolecules and immune cells to and from the brain, and maintaining homeostasis of the CNS [32, 33]. Inflammation can affect the barrier properties of the BBB. However, clinical and in vitro data on inflammation and underlying pathomechanisms at the BBB in breast cancer patients with cerebral metastases are limited. Therefore, we designed the present study to analyse serum-derived chemokines in breast cancer patients with different cancer characteristics and to test the effects of patient sera on the BBB properties in vitro.

We utilized the CD34<sup>+</sup> cells-derived in vitro BBB model first published by Cecchelli et al. in 2014 [12]. Similar to the first report on this model, we observed the induction of TJ proteins, multiple transporters and cellular receptors either at the protein or mRNA level when the cells were co-cultured together with pericytes. Pericytes have

been chosen, because they induce BBB characteristics in CD34<sup>+</sup> cells-derived hematopoietic stem cells [12] and they are known to play a role in the maturation and stabilization of the BBB [34, 35]. Induction of TJ-protein expression was accompanied by low paracellular permeability for fluorescein. The permeability values were similar to previously published values for this [12] and also for other in vitro BBB models [36]. However, fluorescein is a transport substrate for organic anion transporter 3 (OAT3) and multidrug resistance protein 2 (MRP2) [37]. These two transporters act in the mammalian BBB in the basolateral-to-apical direction, therefore they limit the apical-to-basolateral flux of fluorescein. This could lead to an underestimation of the paracellular fluorescein diffusion in our model system. However, the differences between the control and the treated cells should still be clearly visible. It can be assumed that a 6 day-co-culture with brain pericytes is sufficient to induce BBB properties in CD34<sup>+</sup> cells-derived hematopoietic stem cells.



Differentiated BLECs can be used to study molecular mechanisms underlying brain disorders, such as brain metastases.

In general, inflammatory mediators are mainly expressed by macrophages such as microglia, but also by astrocytes, oligodendrocytes and vascular endothelial cells [38]. Numerous mediators play a role in this out-balanced process, including anti-inflammatory cytokines, pro-inflammatory cytokines, chemokine-ligands and receptors. A correlation between cancer metastases and cytokine expression is discussed for various tumour entities [39, 40], including breast cancer [41, 42]. Therefore, we examined chemokines in the sera of breast cancer patients with and without cerebral metastases in comparison to healthy donors. Among the chemokines tested, CX3CL1 and CXCL13 were selectively and significantly increased in patients with cerebral metastases of breast cancer. The chemokines

levels correlated with the tumour properties and the presence of other chemokines in patient sera. We identified a statistically significant correlation between RANTES and MCP-1 as well as BCA-1 and CCL20. RANTES and MCP-1 co-expression in breast cancer was associated with more advanced stages of the disease [43]. High CCL20 levels contribute to the formation of bone metastases in breast cancer [44]. CX3CL1 (also known as fractalkine or neurotactin) is a membrane-bound chemokine that can facilitate intercellular interactions, interacts with the TNF $\alpha$ -converting enzyme ADAM17 and is released in its shed form by apoptotic cells to recruit professional phagocytes to the site of cell death [45, 46]. Fractalkine serum concentrations were higher in patients with the ER/PR negative tumours, which is in line with the literature. Andre et al. showed in a study with 142 patients that a high CX3CL1 expression in the primary cancer

correlates with brain metastases in a 13-year median-follow up [47]. Similarly, Tsang et al. postulated that CX3CL1 expression is associated with poor outcome in breast cancer patients [48]. High levels of CX3CL1 in cells can attract those cancer cells expressing its receptor CX3CR1 and trigger them to invade the tissue and form metastases as seen e.g. in breast cancer spinal metastases [49]. In our study, we showed that CX3CL1 is selectively elevated in the serum of breast cancer patients with cerebral metastases. CX3CL1 may therefore be involved in the formation of metastases in the brain, but further investigations are needed to fully elucidate the underlying mechanisms. Another elevated chemokine in the serum of breast cancer patients with brain metastases was CXCL13 (also known as B cell-attracting chemokine 1, BCA-1). Our results are consistent with other reports showing elevated BCA-1 serum concentrations in patients with metastatic disease [50]. A negative correlation between BCA-1 and the histological grading in patients with brain metastases indicates that high BCA-1 serum concentrations can lead to brain metastases from moderately differentiated tumours with low histological grading. However, our analysis is limited by a small number of samples. In breast cancer cell lines, CXCL13 induced changes of epithelial-to-mesenchymal transition marker expression. It upregulated vimentin, Snail, Slug, N-cadherin, MMP9 and RANKL and downregulated E-cadherin [51]. The endothelial-to-mesenchymal transition of brain endothelial cells has been described [52] and could also play a role in our *in vitro* model. We detected the mRNA of CXCR5 and CX3CR1 in BLECs, which are chemokine receptors for BCA-1 and fractalkine, respectively. The presence of mRNA expression of these receptors also indicates protein expression in BLECs. The receptors can bind BCA-1 and fractalkine present in sera or cell culture medium and transmit their signals. However, the cells treated with recombinant BCA-1 and fractalkine showed an increase in paracellular permeability only at high chemokine concentrations, with no effects in the concentration range observed in patient sera. This suggests that the BCA-1 and fractalkine require other synergistic factors in serum to affect the barrier. Induction of CXCL13 and CX3CL1 accompanied by compromised barrier integrity, has been reported in brain endothelial cells that overexpress claudin-1 and during ischemia/reperfusion injury in animal models [53]. It appears that CXCL13 and CX3CL1 are part of the endothelial inflammatory phenotype that plays a role in various cellular processes.

One of the limitations of our study may be the moderate number of serum samples taken from breast cancer

patients, especially those with cerebral metastases. It will be interesting to increase the number of samples for chemokine analyses and to further evaluate serum effects on BBB properties. *In vitro* BBB models are valuable tools for studying cellular responses to factors such as patient sera. However, we need to consider that these are model systems that do not fully restore the microenvironment present in the human body.

## Conclusion

The CD34<sup>+</sup> cell-derived human *in vitro* BBB model shows high barrier properties, accompanied by the expression of BBB and endothelial cell markers. It was used in the present study to analyse the mechanisms underlying the formation of cerebral metastases in breast cancer. Sera with elevated CX3CL1 and CXCL13 levels displayed barrier-compromising effects *in vitro* and therefore could contribute to the formation of brain metastases by breast cancer cells *in vivo*.

## Acknowledgements

Special thanks go to Elisabeth Wilken, Anja Neuhoff and Mariola Dragan for an excellent technical assistance. We acknowledge the donors of blood samples for contributing to this study.

## Authors' contributions

CJC, CS, JF, CH, SLH, MB performed and analysed experiments and wrote the manuscript. FG, NS, NR, AW, PM provided crucial reagents. All authors read and approved the final manuscript.

## Funding

This work was supported by the Open Access Publication Fund of the University of Würzburg, Universitätsbund Würzburg and institutional funds.

## Availability of data and materials

The datasets used and/or analysed during the current study are available from the corresponding author on reasonable request.

## Ethics approval and consent to participate

All human samples were collected from donors only after signing an informed consent form in accordance with German legislation rules. Herby we followed and strictly adhered to the Ethical Guidelines of the University of Würzburg (Reference number: 137/18-me), which are in accordance to the Helsinki Declaration of 1975 and its revision of 1983.

## Consent for publication

Not applicable.

## Competing interests

None.

## Author details

<sup>1</sup> Department of Gynecology and Obstetrics, University of Würzburg, Würzburg, Germany. <sup>2</sup> Department of Anaesthesia and Critical Care, University of Würzburg, Oberdürrbacher Straße 6, 97080 Würzburg, Germany. <sup>3</sup> Department of Neurosurgery, Tumour Biology Laboratory, University of Würzburg, Würzburg, Germany. <sup>4</sup> Department of Surgery I, University of Würzburg, Würzburg, Germany. <sup>5</sup> Blood-Brain Barrier Laboratory, Université d'Artois, UR 2465 Lens, France.

Received: 1 February 2020 Accepted: 13 April 2020

Published online: 22 April 2020

## References

- Helms HC, Abbott NJ, Burek M, Cecchelli R, Couraud PO, Deli MA, et al. In vitro models of the blood-brain barrier: an overview of commonly used brain endothelial cell culture models and guidelines for their use. *J Cereb Blood Flow Metab.* 2016;36(5):862–90.
- Wilhelm I, Krizbai IA. In vitro models of the blood-brain barrier for the study of drug delivery to the brain. *Mol Pharm.* 2014;11(7):1949–63.
- Urich E, Lazić SE, Molnos J, Wells I, Freskgard PO. Transcriptional profiling of human brain endothelial cells reveals key properties crucial for predictive in vitro blood-brain barrier models. *PLoS ONE.* 2012;7(5):e38149.
- Appelt-Menzel A, Cubukova A, Gunther K, Edenhofer F, Piontek J, Krause G, et al. Establishment of a human blood–brain barrier co-culture model mimicking the neurovascular unit using induced pluri- and multipotent stem cells. *Stem Cell Reports.* 2017;8(4):894–906.
- Katt ME, Xu ZS, Gerecht S, Searson PC. Human brain microvascular endothelial cells derived from the BC1 iPSC cell line exhibit a blood–brain barrier phenotype. *PLoS ONE.* 2016;11(4):e0152105.
- Katt ME, Linville RM, Mayo LN, Xu ZS, Searson PC. Functional brain-specific microvessels from iPSC-derived human brain microvascular endothelial cells: the role of matrix composition on monolayer formation. *Fluids Barriers CNS.* 2018;15(1):7.
- Lim RG, Quan C, Reyes-Ortiz AM, Lutz SE, Kedaigle AJ, Gipson TA, et al. Huntington's disease iPSC-derived brain microvascular endothelial cells reveal WNT-mediated angiogenic and blood-brain barrier deficits. *Cell Rep.* 2017;19(7):1365–77.
- Lippmann ES, Azarin SM, Kay JE, Nessler RA, Wilson HK, Al-Ahmad A, et al. Derivation of blood–brain barrier endothelial cells from human pluripotent stem cells. *Nat Biotechnol.* 2012;30(8):783–91.
- Lippmann ES, Al-Ahmad A, Azarin SM, Palecek SP, Shusta EV. A retinoic acid-enhanced, multicellular human blood–brain barrier model derived from stem cell sources. *Sci Rep.* 2014;4:4160.
- Ribocco-Lutkiewicz M, Sodja C, Haukenfrers J, Haqqani AS, Ly D, Zachar P, et al. A novel human induced pluripotent stem cell blood-brain barrier model: applicability to study antibody-triggered receptor-mediated transcytosis. *Sci Rep.* 2018;8(1):1873.
- Praca C, Rosa SC, Sevin E, Cecchelli R, Dehouck MP, Ferreira LS. Derivation of brain capillary-like endothelial cells from human pluripotent stem cell-derived endothelial progenitor cells. *Stem Cell Reports.* 2019;13(4):599–611.
- Cecchelli R, Aday S, Sevin E, Almeida C, Culot M, Dehouck L, et al. A stable and reproducible human blood-brain barrier model derived from hematopoietic stem cells. *PLoS ONE.* 2014;9(6):e99733.
- Boyer-Di Ponio J, El-Ayoubi F, Glacial F, Ganeshamoorthy K, Driancourt C, Godet M, et al. Instruction of circulating endothelial progenitors in vitro towards specialized blood-brain barrier and arterial phenotypes. *PLoS ONE.* 2014;9(1):e84179.
- Lyck R, Lecuyer MA, Abadier M, Wyss CB, Matti C, Rosito M, et al. ALCAM (CD166) is involved in extravasation of monocytes rather than T cells across the blood-brain barrier. *J Cereb Blood Flow Metab.* 2017;37(8):2894–909.
- Drolez A, Vandenhautte E, Delannoy CP, Dewald JH, Gosselet F, Cecchelli R, et al. ST6GALNAC5 expression decreases the interactions between breast cancer cells and the human blood–brain barrier. *Int J Mol Sci.* 2016;17(8):1309.
- Drolez A, Vandenhautte E, Julien S, Gosselet F, Burchell J, Cecchelli R, et al. Selection of a relevant in vitro blood-brain barrier model to investigate pro-metastatic features of human breast cancer cell lines. *PLoS ONE.* 2016;11(3):e0151155.
- Vandenhautte E, Drolez A, Sevin E, Gosselet F, Mysiorek C, Dehouck MP. Adapting coculture in vitro models of the blood-brain barrier for use in cancer research: maintaining an appropriate endothelial monolayer for the assessment of transendothelial migration. *Lab Invest.* 2016;96(5):588–98.
- Rick JW, Shahin M, Chandra A, Dalle Ore C, Yue JK, Nguyen A, et al. Systemic therapy for brain metastases. *Crit Rev Oncol Hematol.* 2019;142:44–50.
- Kennecke H, Yerushalmi R, Woods R, Cheang MC, Voduc D, Speers CH, et al. Metastatic behavior of breast cancer subtypes. *J Clin Oncol.* 2010;28(20):3271–7.
- Arvold ND, Oh KS, Niemierko A, Taghian AG, Lin NU, Abi-Raad RF, et al. Brain metastases after breast-conserving therapy and systemic therapy: incidence and characteristics by biologic subtype. *Breast Cancer Res Treat.* 2012;136(1):153–60.
- Nagarsheth N, Wicha MS, Zou W. Chemokines in the cancer microenvironment and their relevance in cancer immunotherapy. *Nat Rev Immunol.* 2017;17(9):559–72.
- Saint-Pol J, Vandenhautte E, Boucau MC, Candela P, Dehouck L, Cecchelli R, et al. Brain pericytes ABCA1 expression mediates cholesterol efflux but not cellular amyloid-beta peptide accumulation. *J Alzheimers Dis.* 2012;30(3):489–503.
- Vandenhautte E, Dehouck L, Boucau MC, Sevin E, Uzbekov R, Tardivel M, et al. Modelling the neurovascular unit and the blood-brain barrier with the unique function of pericytes. *Curr Neurovasc Res.* 2011;8(4):258–69.
- Meresse S, Dehouck MP, Delorme P, Bensaid M, Tauber JP, Delbart C, et al. Bovine brain endothelial cells express tight junctions and monoamine oxidase activity in long-term culture. *J Neurochem.* 1989;53(5):1363–71.
- Wimmer I, Tietz S, Nishihara H, Deutsch U, Sallusto F, Gosselet F, et al. PECAM-1 stabilizes blood-brain barrier integrity and favors paracellular T-cell diapedesis across the blood–brain barrier during neuroinflammation. *Front Immunol.* 2019;10:711.
- Dilling C, Roewer N, Forster CY, Burek M. Multiple protocadherins are expressed in brain microvascular endothelial cells and might play a role in tight junction protein regulation. *J Cereb Blood Flow Metab.* 2017;37(10):3391–400.
- Burek M, König A, Lang M, Fiedler J, Oerter S, Roewer N, et al. Hypoxia-induced microRNA-212/132 alter blood–brain barrier integrity through inhibition of tight junction-associated proteins in human and mouse brain microvascular endothelial cells. *Transl Stroke Res.* 2019;10(6):672–83.
- Gerhartl A, Hahn K, Neuhoff A, Friedl HP, Forster CY, Wunder C, et al. Hydroxyethylstarch (130/0.4) tightens the blood–brain barrier in vitro. *Brain Res.* 2019;1727:146560.
- Kaiser M, Burek M, Britz S, Lankamp F, Ketelhut S, Kemper B, et al. The influence of capsaicin on the integrity of microvascular endothelial cell monolayers. *Int J Mol Sci.* 2018;20(1):122.
- Salvador E, Burek M, Forster CY. Stretch and/or oxygen glucose deprivation (OGD) in an in vitro traumatic brain injury (TBI) model induces calcium alteration and inflammatory cascade. *Front Cell Neurosci.* 2015;9:323.
- Vogel C, Marcotte EM. Insights into the regulation of protein abundance from proteomic and transcriptomic analyses. *Nat Rev Genet.* 2012;13(4):227–32.
- Blanchette M, Daneman R. Formation and maintenance of the BBB. *Mech Dev.* 2015;138(Pt 1):8–16.
- Williams JL, Holman DW, Klein RS. Chemokines in the balance: maintenance of homeostasis and protection at CNS barriers. *Front Cell Neurosci.* 2014;8:154.
- Armulik A, Genove G, Mae M, Nisancioglu MH, Wallgard E, Niaudet C, et al. Pericytes regulate the blood–brain barrier. *Nature.* 2010;468(7323):557–61.
- Daneman R, Zhou L, Kebede AA, Barres BA. Pericytes are required for blood–brain barrier integrity during embryogenesis. *Nature.* 2010;468(7323):562–6.
- Deli MA, Abraham CS, Kataoka Y, Niwa M. Permeability studies on in vitro blood–brain barrier models: physiology, pathology, and pharmacology. *Cell Mol Neurobiol.* 2005;25(1):59–127.
- Hawkins BT, Ocheltree SM, Norwood KM, Egleton RD. Decreased blood-brain barrier permeability to fluorescein in streptozotocin-treated rats. *Neurosci Lett.* 2007;411(1):1–5.
- Le Thuc O, Blondeau N, Nahon JL, Rovere C. The complex contribution of chemokines to neuroinflammation: switching from beneficial to detrimental effects. *Ann N Y Acad Sci.* 2015;1351:127–40.
- Liu JF, Tsao YT, Hou CH. Fractalkine/CX3CL1 induced intercellular adhesion molecule-1-dependent tumor metastasis through the CX3CR1/PI3K/Akt/NF-kappaB pathway in human osteosarcoma. *Oncotarget.* 2017;8(33):54136–48.
- Erreni M, Siddiqui I, Marelli G, Grizzi F, Bianchi P, Morone D, et al. The fractalkine-receptor axis improves human colorectal cancer prognosis by limiting tumor metastatic dissemination. *J Immunol.* 2016;196(2):902–14.
- Muller A, Homey B, Soto H, Ge N, Catron D, Buchanan ME, et al. Involvement of chemokine receptors in breast cancer metastasis. *Nature.* 2001;410(6824):50–6.

42. Lv M, Xiaoping X, Cai H, Li D, Wang J, Fu X, et al. Cytokines as prognostic tool in breast carcinoma. *Front Biosci (Landmark Ed)*. 2011;16:2515–26.
43. Soria G, Yaal-Hahoshen N, Azenshtein E, Shina S, Leider-Trejo L, Ryvo L, et al. Concomitant expression of the chemokines RANTES and MCP-1 in human breast cancer: a basis for tumor-promoting interactions. *Cytokine*. 2008;44(1):191–200.
44. Lee SK, Park KK, Kim HJ, Park J, Son SH, Kim KR, et al. Human antigen R-regulated CCL20 contributes to osteolytic breast cancer bone metastasis. *Sci Rep*. 2017;7(1):9610.
45. Jones BA, Beamer M, Ahmed S. Fractalkine/CX3CL1: a potential new target for inflammatory diseases. *Mol Interv*. 2010;10(5):263–70.
46. Sokolowski JD, Chabanon-Hicks CN, Han CZ, Heffron DS, Mandell JW. Fractalkine is a “find-me” signal released by neurons undergoing ethanol-induced apoptosis. *Front Cell Neurosci*. 2014;8:360.
47. Andre F, Cabioglu N, Assi H, Sabourin JC, Delaloge S, Sahin A, et al. Expression of chemokine receptors predicts the site of metastatic relapse in patients with axillary node positive primary breast cancer. *Ann Oncol*. 2006;17(6):945–51.
48. Tsang JY, Ni YB, Chan SK, Shao MM, Kwok YK, Chan KW, et al. CX3CL1 expression is associated with poor outcome in breast cancer patients. *Breast Cancer Res Treat*. 2013;140(3):495–504.
49. Liang Y, Yi L, Liu P, Jiang LB, Wang HL, Hu AN, et al. CX3CL1 involves in breast cancer metastasizing to the spine via the Src/FAK signaling pathway. *J Cancer*. 2018;9(19):3603–12.
50. Panse J, Friedrichs K, Marx A, Hildebrandt Y, Luetkens T, Barrels K, et al. Chemokine CXCL13 is overexpressed in the tumour tissue and in the peripheral blood of breast cancer patients. *Br J Cancer*. 2008;99(6):930–8.
51. Biswas S, Sengupta S, Roy Chowdhury S, Jana S, Mandal G, Mandal PK, et al. CXCL13-CXCR5 co-expression regulates epithelial to mesenchymal transition of breast cancer cells during lymph node metastasis. *Breast Cancer Res Treat*. 2014;143(2):265–76.
52. Krizbai IA, Gasparics A, Nagyoszi P, Fazakas C, Molnar J, Wilhelm I, et al. Endothelial-mesenchymal transition of brain endothelial cells: possible role during metastatic extravasation. *PLoS ONE*. 2015;10(3):e0123845.
53. Sladojevic N, Stamatovic SM, Johnson AM, Choi J, Hu A, Dithmer S, et al. Claudin-1-dependent destabilization of the blood–brain barrier in chronic stroke. *J Neurosci*. 2019;39(4):743–57.

### Publisher's Note

Springer Nature remains neutral with regard to jurisdictional claims in published maps and institutional affiliations.

Ready to submit your research? Choose BMC and benefit from:

- fast, convenient online submission
- thorough peer review by experienced researchers in your field
- rapid publication on acceptance
- support for research data, including large and complex data types
- gold Open Access which fosters wider collaboration and increased citations
- maximum visibility for your research: over 100M website views per year

At BMC, research is always in progress.

Learn more [biomedcentral.com/submissions](https://biomedcentral.com/submissions)

